



Solid State Devices, Inc.

14701 Firestone Blvd * La Mirada, Ca 90638
 Phone: (562) 404-4474 * Fax: (562) 404-1773
 ssdi@ssdi-power.com * www.ssdi-power.com

**SDR526 thru SDR529
 SDR526SMS thru SDR529SMS**

**3 AMPS
 600 – 900 VOLTS
 35 nsec
 HYPER FAST
 RECTIFIER**

Designer's Data Sheet

Part Number/Ordering Information ^{1/}
SDR52

--	--	--	--

Screening ^{2/}
 ___ = Not Screened
 TX = TX Level
 TXV = TXV
 S = S Level

Package Type
 ___ = Axial
 SMS = Surface Mount Square Tab

Voltage/Family
 6 = 600V
 7 = 700V
 8 = 800V
 9 = 900V

- FEATURES:**
- Hyper Fast Recovery: 35 nsec maximum
 - PIV up to 900 Volts
 - Avalanche Breakdown
 - Hermetically Sealed
 - For High Efficiency High Voltage Applications
 - Single Chip Construction
 - Metallurgically Bonded
 - TX, TXV, and Space Level Screening Available^{2/}

MAXIMUM RATINGS		Symbol	Value	Units
Peak Repetitive Reverse Voltage and DC Blocking Voltage @ 50µA	SDR526	V_{RRM} V_{RWM} V_R	600	Volts
	SDR527		700	
	SDR528		800	
	SDR529		900	
Average Rectified Forward Current (Resistive Load, 60 Hz, Sine Wave, $T_A=25^\circ\text{C}$)		I_O	3	Amps
Peak Surge Current (8.3 ms Pulse, Half Sine Wave, Superimposed on I_O , allow junction to reach equilibrium between pulses, $T_A=25^\circ\text{C}$)		I_{FSM}	75	Amps
Operating and Storage Temperature		T_{OP} & T_{stg}	-65 to +175	°C
Maximum Thermal Resistance Junction to Lead, L = 0.125" (Axial Lead) Junction to End Tab (Surface Mount)		$R_{\theta JL}$ $R_{\theta JE}$	20 10	°C/W

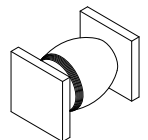
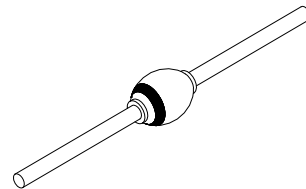
Notes:

^{1/} For Ordering Information, Price, Operating Curves, and Availability- Contact Factory.

^{2/} Screening Based on MIL-PRF-19500. Screening Flow Available on Request.

Axial

Surface Mount Square Tab (SMS)





Solid State Devices, Inc.

14701 Firestone Blvd * La Mirada, Ca 90638
 Phone: (562) 404-4474 * Fax: (562) 404-1773
 ssdi@ssdi-power.com * www.ssdi-power.com

**SDR526 thru SDR529
 SDR526SMS thru SDR529SMS**

ELECTRICAL CHARACTERISTICS		Symbol	Min	Max	Unit
Instantaneous Forward Voltage Drop ($I_F = 3 A_{DC}$, 300 - 500 μ sec Pulse)	$T_A = 25^\circ C$	V_{F1}	—	2.50	Volts
	$T_A = -55^\circ C$	V_{F2}	—	2.50	Volts
Reverse Leakage Current (Rated V_R , 300 μ sec minimum pulse)	$T_A = 25^\circ C$	I_{R1}	—	50	μA
	$T_A = 100^\circ C$	I_{R2}	—	250	μA
Junction Capacitance ($V_R = 10 V_{DC}$, $T_A = 25^\circ C$, $f = 1 MHz$)		C_J	—	50	pF
Reverse Recovery Time ($I_F = 500 mA$, $I_R = 1 A$, $I_{RR} = 250 mA$, $T_A = 25^\circ C$)		t_{rr}	—	35	ns

Case Outline: (Axial)

DIM	MIN	MAX
A	0.140"	0.180"
B	0.170"	0.230"
C	0.046"	0.053"
D	1.00"	—

Case Outline: (SMS)

DIM	MIN	MAX
A	0.170"	0.180"
B	0.220"	0.280"
C	0.020"	0.030"
D	0.002"	—

Note: Dimensions prior to soldering.

NOTES:
 Consult manufacturing for operating curves.